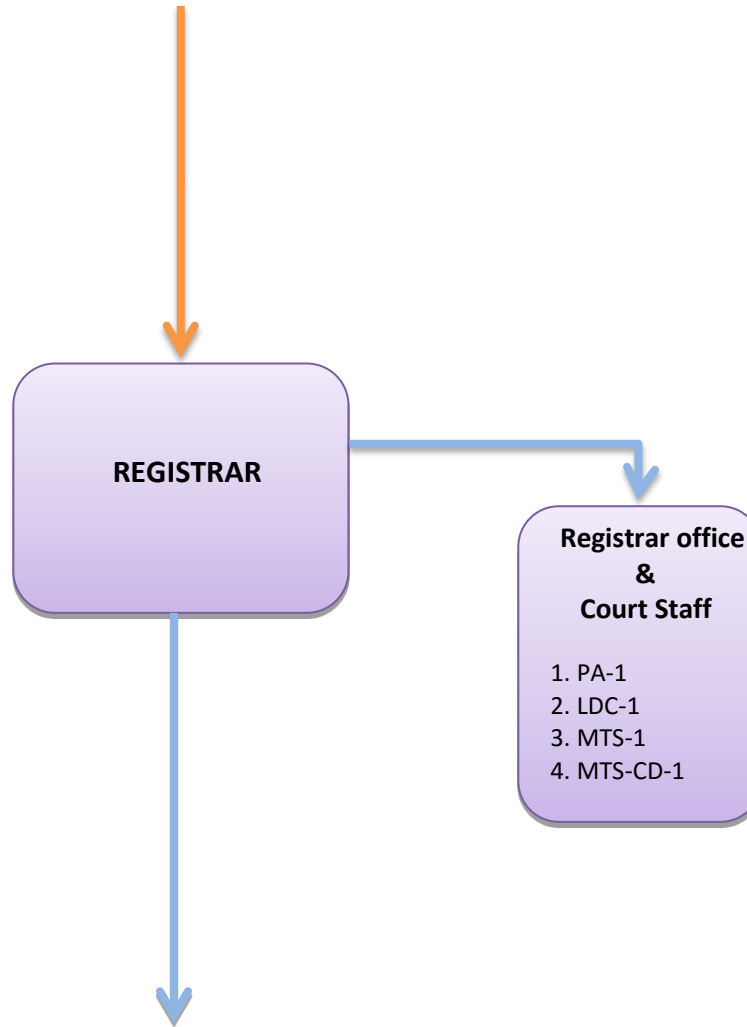


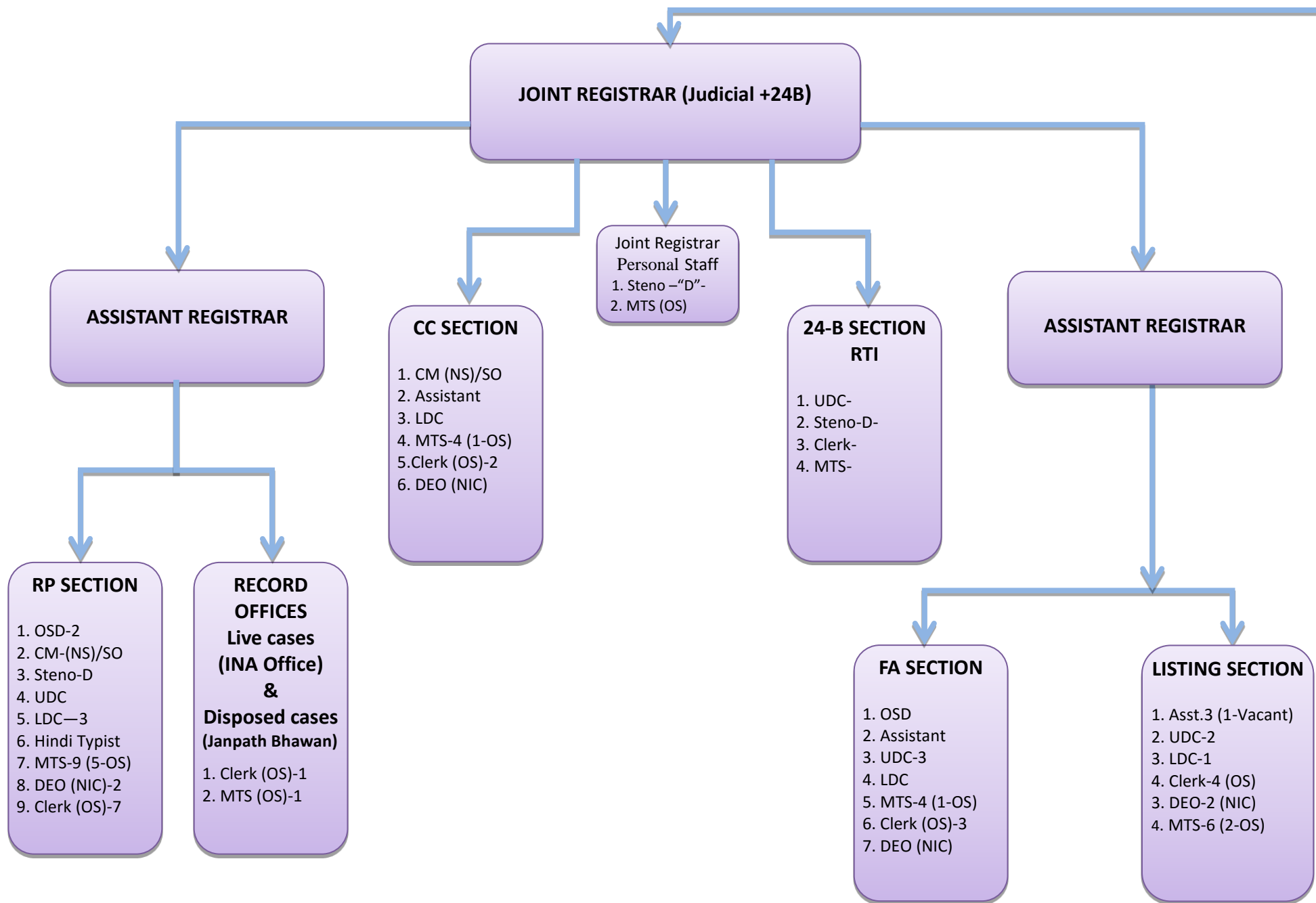
EXISTING ORGANIZATION STRUCTURE OF THE NCDRC (PI – A)

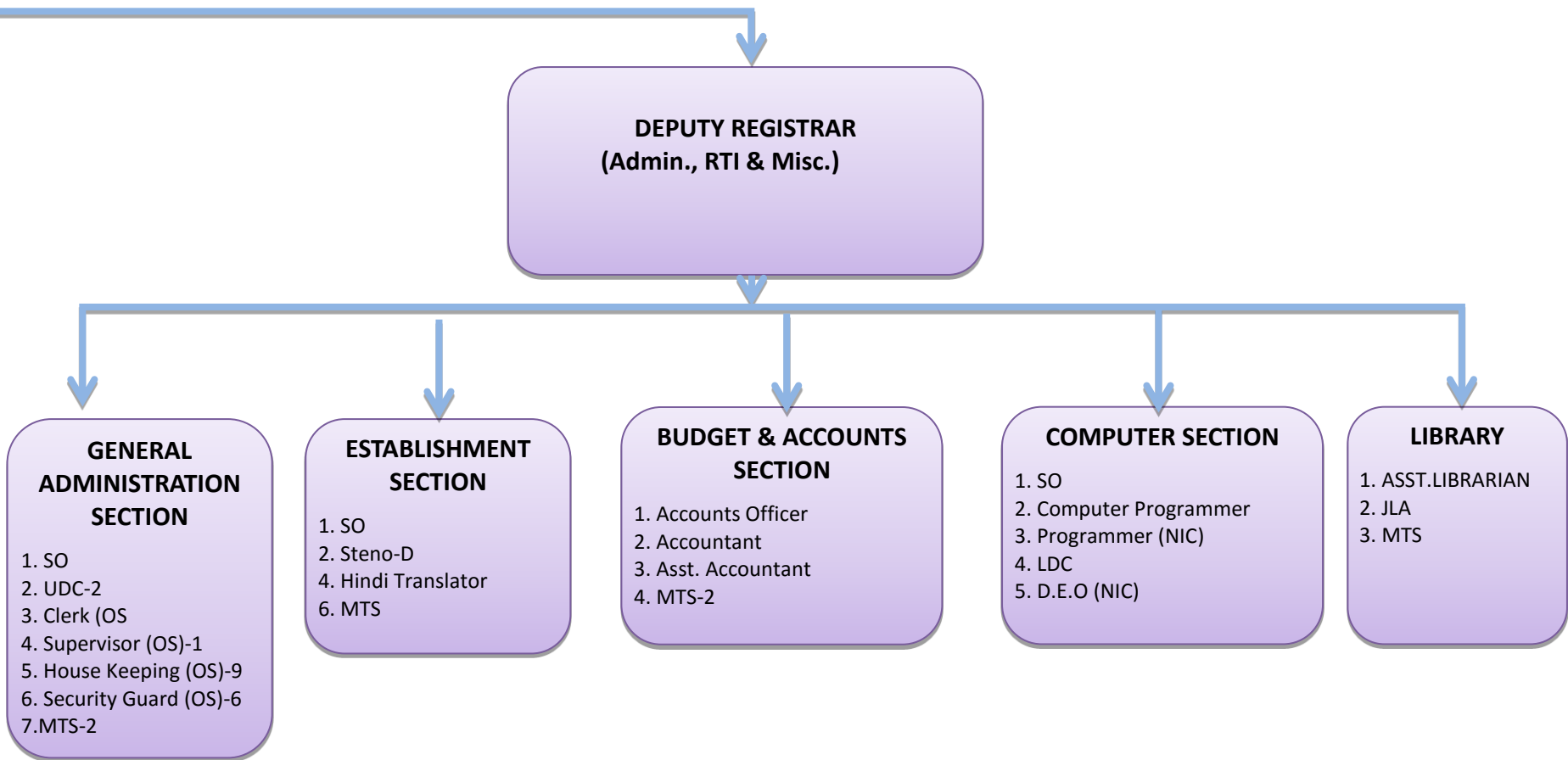
6 BENCHES WITH PRESIDENT AND 11 Members

COURT / PERSONAL STAFF OF THE PRESIDENT'S AND MEMBERS

1. Assistant Registrar
2. PPS-1
3. PS-12
4. PA-8
5. CM-10
6. Steno "D"-1
7. UDC-1
8. MTS-21 (6-OS)
9. Clerk (OS)-2
10. Security Guard (OS)-2
11. SCD-1







Some Abbreviations:

SO	Section officer
PPS	Principal Private Secretary
PS	Private Secretary
PA	Personal Assistant
CM	Court Master
OSD	Officer on Special Duty (Outsourcing)

Clerk (OS)	Clerk (Outsourcing)
JLA	Junior Library Attendant
DEO (NIC)	Data Entry Operator through NIC (Outsourcing)
MTS (OS)	Multi-Tasking Staff (Outsourcing)
SCD	Staff Car Driver